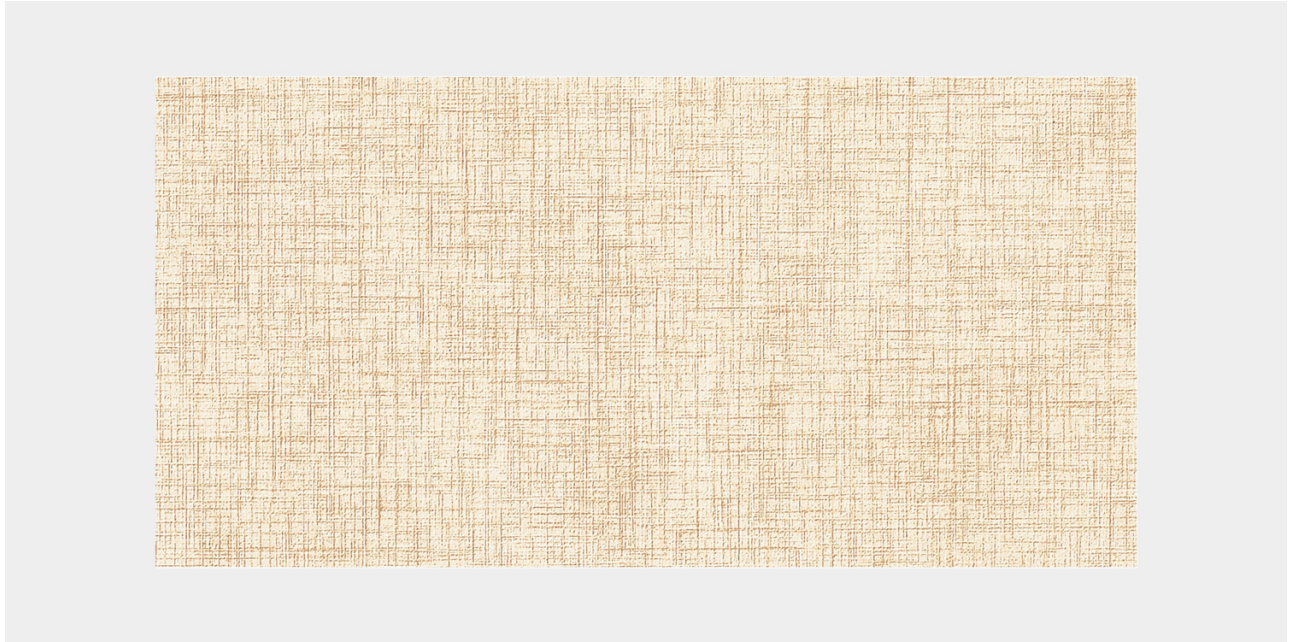


# Solara Perth



## SIZES

□ 12" x 24"

All sizes are nominal and in inches. Special cut sizes and additional trim pieces are available upon meeting a required minimum order quantity.

## LEAD TIME

**1 – 5 Business Days** | All Sizes + Finishes

Lead times are approximate and can vary based on quantity ordered, production schedule & delivery location.

## FORMAT + THICKNESS

Tile | 3/8"

Most of our tiles are rectified and micro-beveled, however we recommend confirming with us prior should this be a necessity.

## FINISHES

□ Matte

## APPLICATIONS

Exterior  
Floors  
Interiors

Facade  
Heavy Traffic  
Walls



Application only applies to matte or textured finishes.

---

## TECHNICAL DATA

Matte + Textured finishes pass required DCOF

Rating of .42

Please refer to the Technical Data Sheet for the complete technical details.

---

## CARE + MAINTAINANCE

Please refer to our Stone + Tile 101 page for a complete guide

[www.nascostonetile.com/stone-tile-101](http://www.nascostonetile.com/stone-tile-101)

Request Quote | Sample

MORE FROM  
**CLEARANCE**  
**ITEMS**  
COLLECTION

