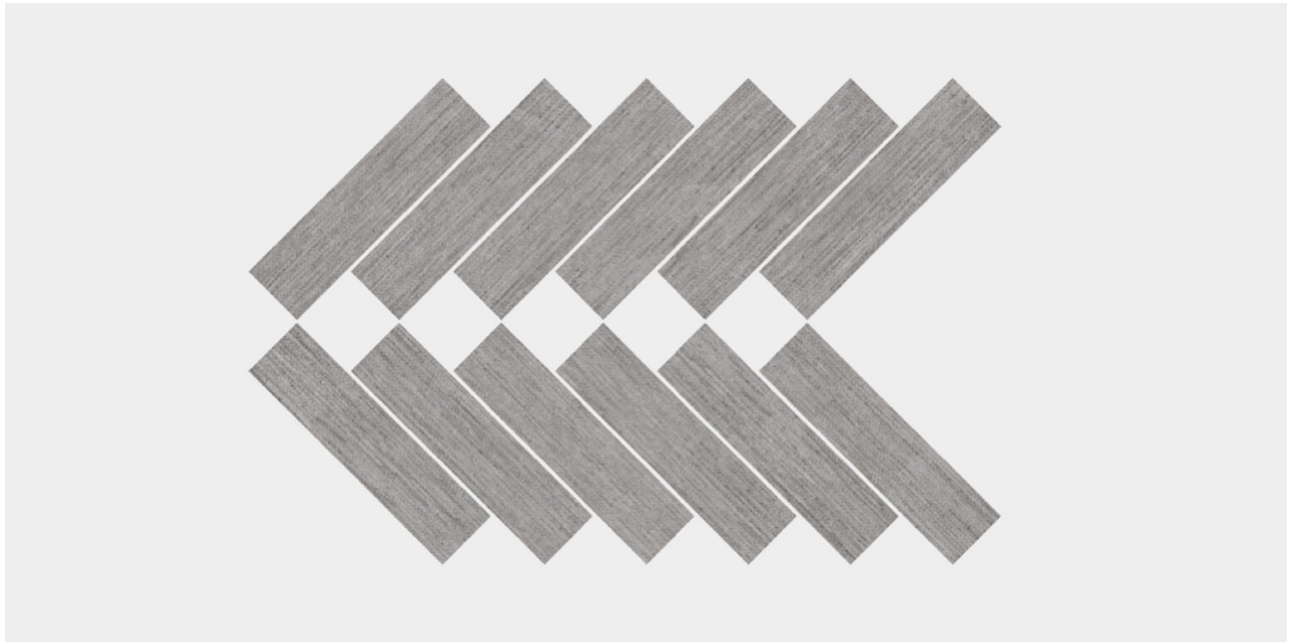


Crave Dark Grey Herringbone

[Request Quote | Sample](#)



SIZES

- ☐ 10" x 24"
 - ☐ Herringbone Mosaic
- All sizes are nominal and in inches. Special cut sizes and additional trim pieces are available upon meeting a required minimum order quantity.

All mosaics are available in corresponding field tiles.

LEAD TIME

1 – 3 Weeks
Lead times are approximate and can vary based on quantity ordered, production schedule & delivery location.

TRIMS

Bullnose Base: 3" x 12"



FORMAT + THICKNESS

Mosaic | 3/8"

Most of our tiles are rectified and micro-beveled, however we recommend confirming with us prior should this be a necessity.

FINISHES

☐ Matte

APPLICATIONS

Floors
Interiors

Heavy Traffic
Walls

SUSTAINABILITY

Recycled Content 40%

TECHNICAL DATA

Please refer to the Technical Data Sheet for the complete technical details.

CARE + MAINTAINANCE

Please refer to our Stone + Tile 101 page for a complete guide
www.nascostonetile.com/stone-tile-101

Request Quote | Sample



PORCELAIN
MOSAICS
COLLECTION

