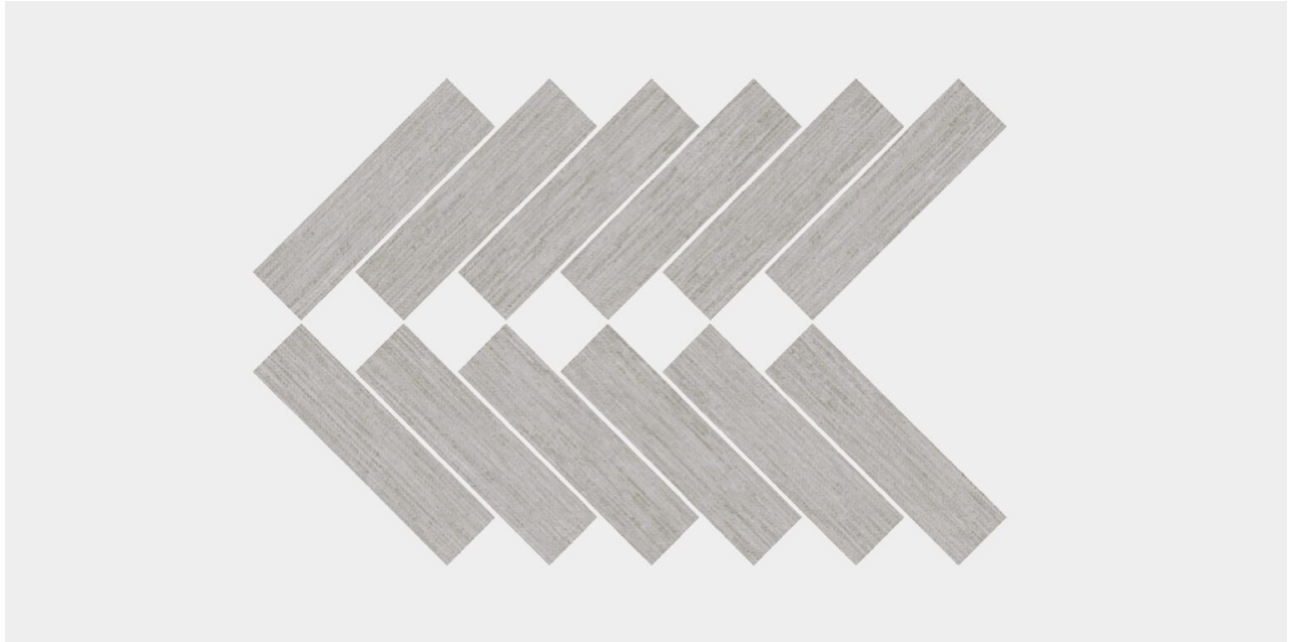


# Crave Light Grey Herringbone



## SIZES

- ☐ 10" x 24"
  - ☐ Herringbone Mosaic
- All sizes are nominal and in inches. Special cut sizes and additional trim pieces are available upon meeting a required minimum order quantity.

All mosaics are available in corresponding field tiles.

## LEAD TIME

- 1 – 3 Weeks**
- Lead times are approximate and can vary based on quantity ordered, production schedule & delivery location.

## TRIMS

Bullnose Base: 3" x 12"

## FORMAT + THICKNESS

- Mosaic | 3/8"
- Most of our tiles are rectified and micro-beveled, however we recommend confirming with us prior should this be a necessity.

## FINISHES



---

## APPLICATIONS

Floors  
Interiors

Heavy Traffic  
Walls

---

## SUSTAINABILITY

Recycled Content 40%

---

## TECHNICAL DATA

Please refer to the Technical Data Sheet for the complete technical details.

---

## CARE + MAINTAINANCE

Please refer to our Stone + Tile 101 page for a complete guide

[www.nascostonetile.com/stone-tile-101](http://www.nascostonetile.com/stone-tile-101)

Request Quote | Sample

MORE FROM  
**PORCELAIN  
MOSAICS**  
COLLECTION



