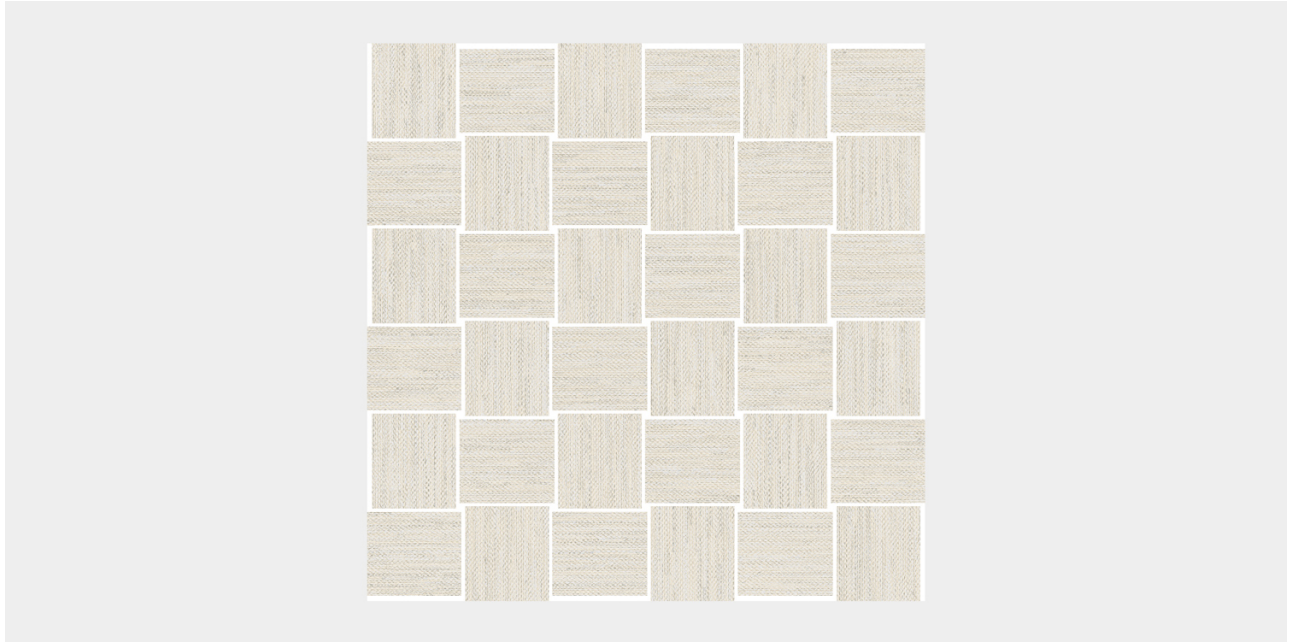


# Crave Bianco Basketweave Mosaic



## SIZES

- ☐ 2" x 2" Mosaic on 12" x 12" Mesh
- ☐ Basketweave Mosaic
- ☐ Mosaic

All sizes are nominal and in inches. Special cut sizes and additional trim pieces are available upon meeting a required minimum order quantity.

All mosaics are available in corresponding field tiles.

## LEAD TIME

### 1 – 3 Weeks

Lead times are approximate and can vary based on quantity ordered, production schedule & delivery location.

## TRIMS

Bullnose Base: 3" x 12"

## FORMAT + THICKNESS

Mosaic | 3/8"

Most of our tiles are rectified and micro-beveled, however we recommend confirming with us prior should this be a necessity. Mosaic is mesh-mounted.



---

## FINISHES

☐ Matte

---

## APPLICATIONS

Floors  
Interiors

Heavy Traffic  
Walls

"Wet" application only applies to matte or textured finishes

---

## SUSTAINABILITY

Recycled Content 40%

---

## TECHNICAL DATA

Please refer to the Technical Data Sheet for the complete technical details.

---

## CARE + MAINTAINCE

Please refer to our Stone + Tile 101 page for a complete guide  
[www.nascostonetile.com/stone-tile-101](http://www.nascostonetile.com/stone-tile-101)

Request Quote | Sample

MORE FROM  
**PORCELAIN  
MOSAICS**  
COLLECTION



