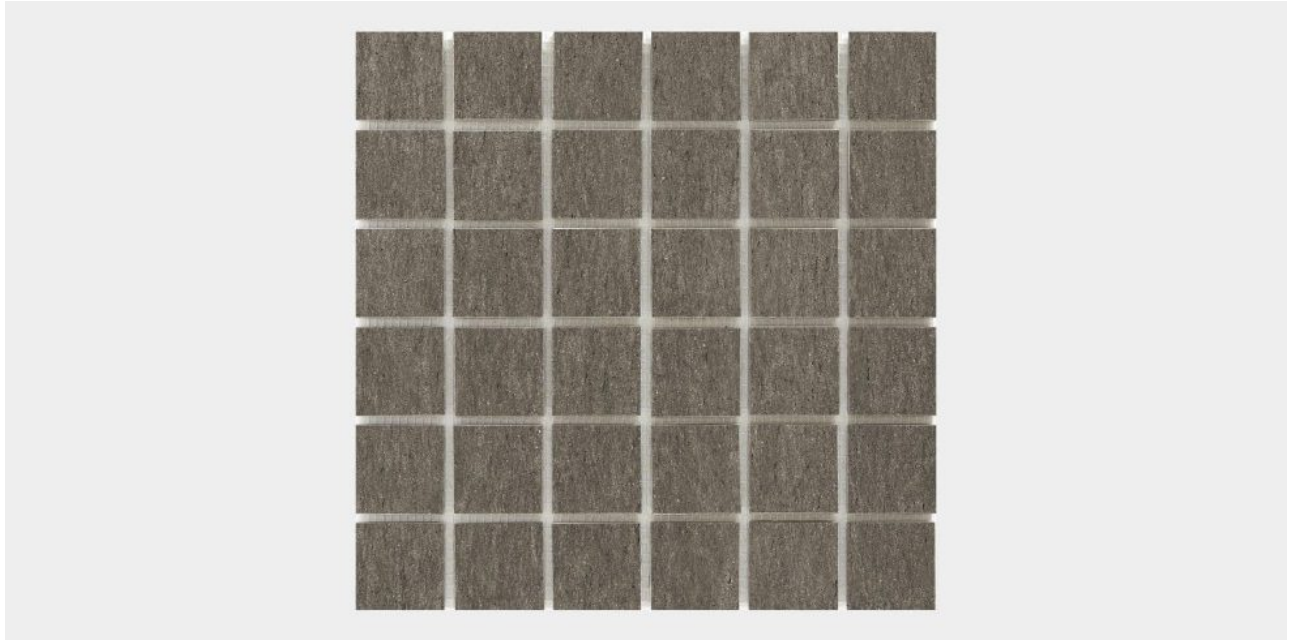


Basaltico Caribou Mosaic



SIZES

- ☐ 2" x 2" Mosaic on 12" x 12" Mesh
- ☐ Mosaic

All sizes are nominal and in inches. Special cut sizes and additional trim pieces are available upon meeting a required minimum order quantity.

All mosaics are available in corresponding field tiles.

LEAD TIME

1 – 3 Weeks

Lead times are approximate and can vary based on quantity ordered, production schedule & delivery location.

TRIMS

Bullnose Base: 3" x 12"
Cove Base: 6" x 12"

FORMAT + THICKNESS

Mosaic | 3/8"

Most of our tiles are rectified and micro-beveled, however we recommend confirming with us prior should this be a necessity. Mosaic is mesh-mounted.



FINISHES

☐ Matte

APPLICATIONS

Exterior
Heavy Traffic
Walls

Floors
Interiors
Wet

SUSTAINABILITY

Recycled Content 26%

TECHNICAL DATA

Please refer to the Technical Data Sheet for the complete technical details.

CARE + MAINTAINANCE

Please refer to our Stone + Tile 101 page for a complete guide

www.nascostonetile.com/stone-tile-101

Request Quote | Sample

MORE FROM
**PORCELAIN
MOSAICS**
COLLECTION



