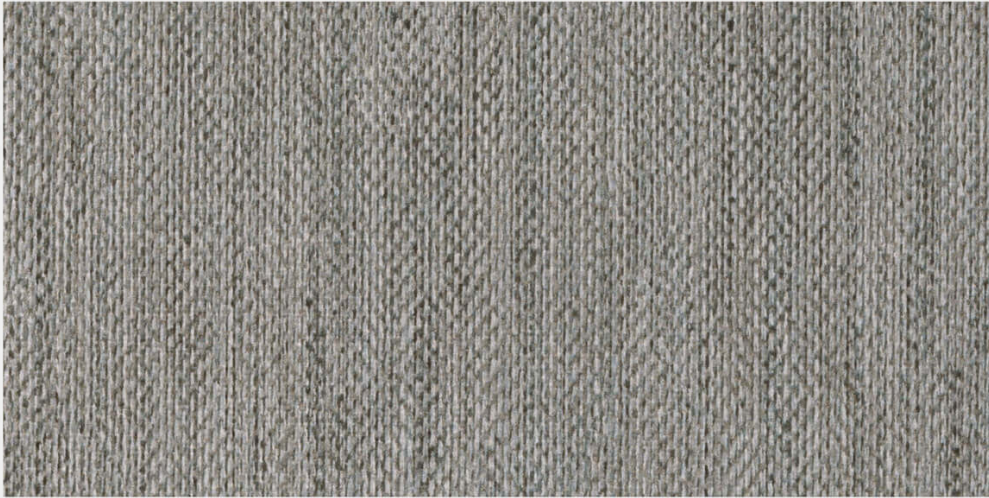


Crave Dark Grey



SIZES

12" x 24"
24" x 24"
8" x 24"

All sizes are nominal and in inches. Special cut sizes and additional trim pieces are available upon meeting a required minimum order quantity.

Matching 2" x 2" basketweave mosaic on 12" x 12" mesh and 10" x 24" herringbone mosaic available.

LEAD TIME

1-3 Weeks | All sizes + finishes

Lead times are approximate and can vary based on quantity ordered, production schedule & delivery location.

TRIMS

Bullnose Base: 3" x 12"

FORMAT + THICKNESS

Tile | 3/8"

Most of our tiles are rectified and micro-beveled, however we recommend confirming with us prior should this be a necessity.

FINISHES

Matte

APPLICATIONS

Floors
Interiors

Heavy Traffic
Walls

"Wet" application only applies to matte or textured finishes

SUSTAINABILITY

Recycled Content 40%

TECHNICAL DATA

Matte + Textured finishes pass required
DCOF Rating of .42

Please refer to the Technical Data Sheet for the complete technical details.

CARE + MAINTAINCE

Please refer to our Stone + Tile 101 page
for a complete guide

www.nascostonetile.com/stone-tile-101